



[HOME](#)   [PORTFOLIO](#)   [ABOUT](#)   [CONTACT](#)

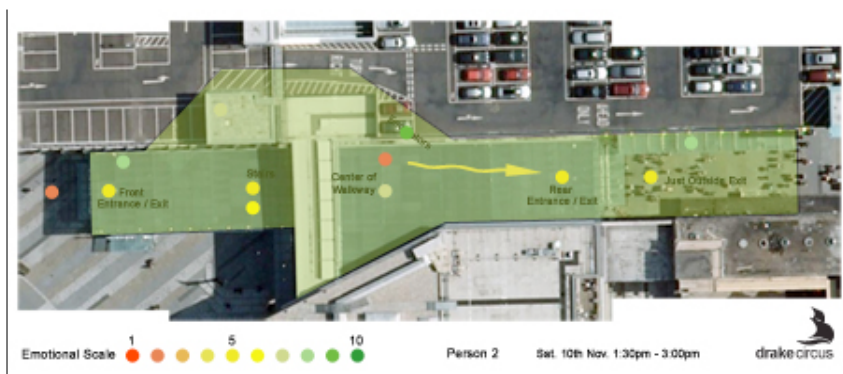
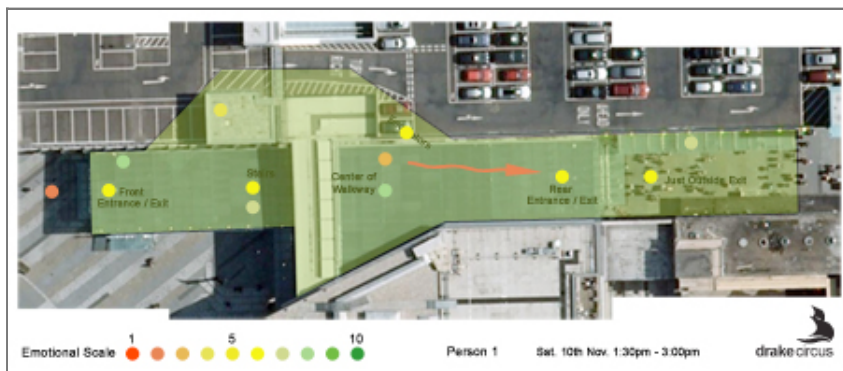
## SPACE: DRAKE CIRCUS EMOTION MAPS

Posted November 15, 2007 at 2:30 pm

Last week we visited Drake Circus to document the space, taking influences from our precedent studies. As I was studying the work of Christian Nold, his [Biomapping](#) project in particular, I decided to try and map emotion in the space. At first I wanted to try and do this subtly by taking photos of peoples faces and judge for myself how they might have been feeling at the time.

Unfortunately because of security it was hard to do this, so on Saturday I went back and subjectively asked people how they felt in particular points in the space, giving me a rating on a scale of 1 to 10, 1 being unhappy/annoyed/uncomfortable and 10 being happy/comfortable/great. Ok, I know the problems surrounding subjective views as there are other things that can influence how some one feels at the time in a particular space so I really asked them to just concentrate on the space itself, clearing anything else from their minds. This was backed up by Henri Lefebvres Dialectic of Space, taking into consideration representation of space, daily practice and space of representation.

I've come up with the following emotional maps, click to enlarge:



I've also put my presentation into a pdf which you can download [here](#).

Tags: [Research](#), [Space](#)

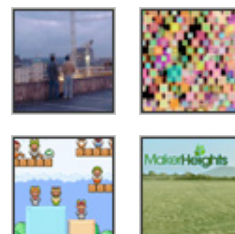
NO COMMENTS »

No comments yet.

LEAVE A COMMENT

Name (required)

### FEATURED



### TAGS

[Dissertation](#)  
[Games](#)  
[General](#)  
[Ideas](#)  
[Project](#)  
[Research](#)  
[Scripting](#)  
[Space](#)

### META

[RSS](#)  
[del.icio.us](#)  
[last.fm](#)

Mail (will not be published) (required)

Website

©evolving:discipline

Powered by Wordpress